



Web Guide

Document Information

Software Version:	V4.0.3.3
Creation Date:	24 July, 2020
Last Edit Date:	8 March, 2022
Version:	1.1

Table of Contents

1. Scope	3
2. Summary	3
3. Installing Internet Information Services (ISS)	4
4. Configure Web Folder (ISS)	6
4.1. Generate HTML Files	7
5. Configuring the Web Project Folder (ISS)	9
6. Configuring ISS and the Web Project	11
7. Changer Default Port (IIS)	15
7.1. Check Ports Being Used	18
8. Installing Apache	20
9. Configure Web Folder and Apache	21
10. Possible Errors	23
10.1. Runtime Not Started	23
10.2. Port Already Being Used	23

1. Scope

This document is only for Microsoft Windows Operating System.

The ADISRA SmartView Web Guide details the steps to publish an application to the web. It will also explain how to change the port number, some possible errors the user might face and how to solve them.

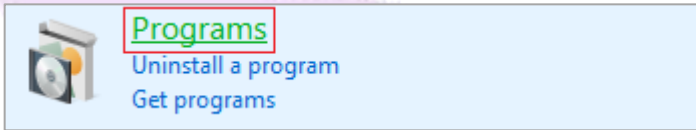
2. Summary

Web server is a software that accepts client requests to deliver a web page. A web server must be configured for ADISRA SmartView to display an application on the web. It can be any web server, but in this document, we will use Microsoft Windows solution called Internet Information Services (IIS) and the Apache HTTP server.

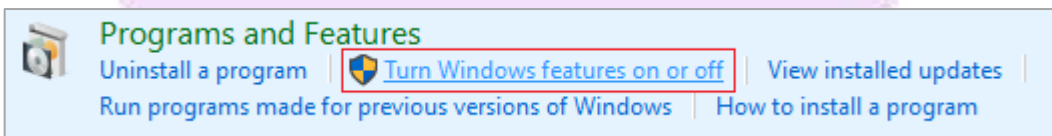
3. Installing Internet Information Services (ISS)

To install the ISS, follow the steps below:

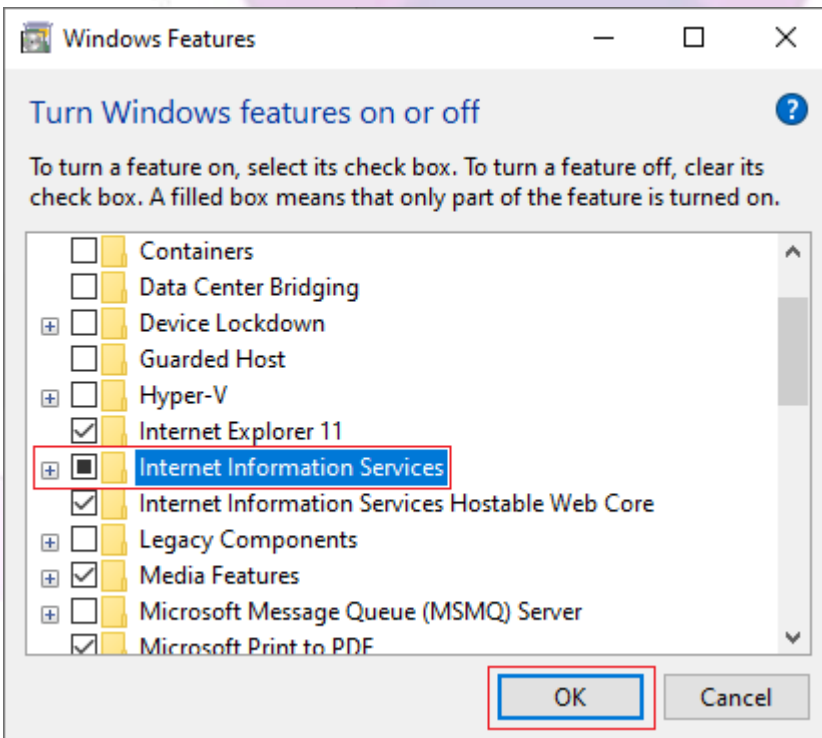
Open the Control Panel and click on “Programs”:



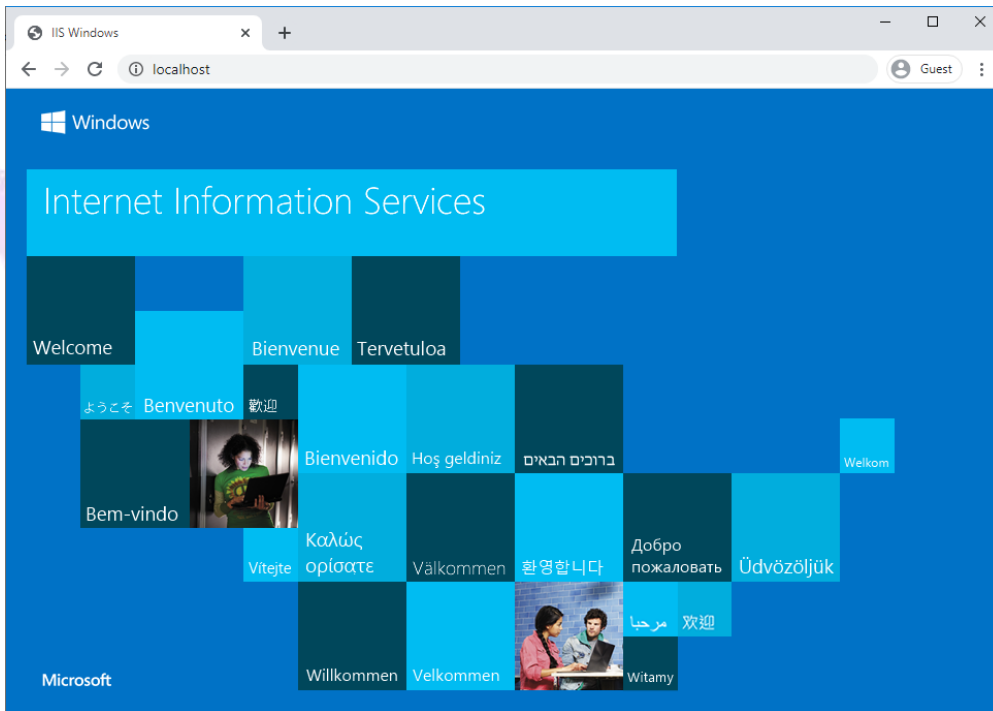
Click on “Turn Windows features on or off”:



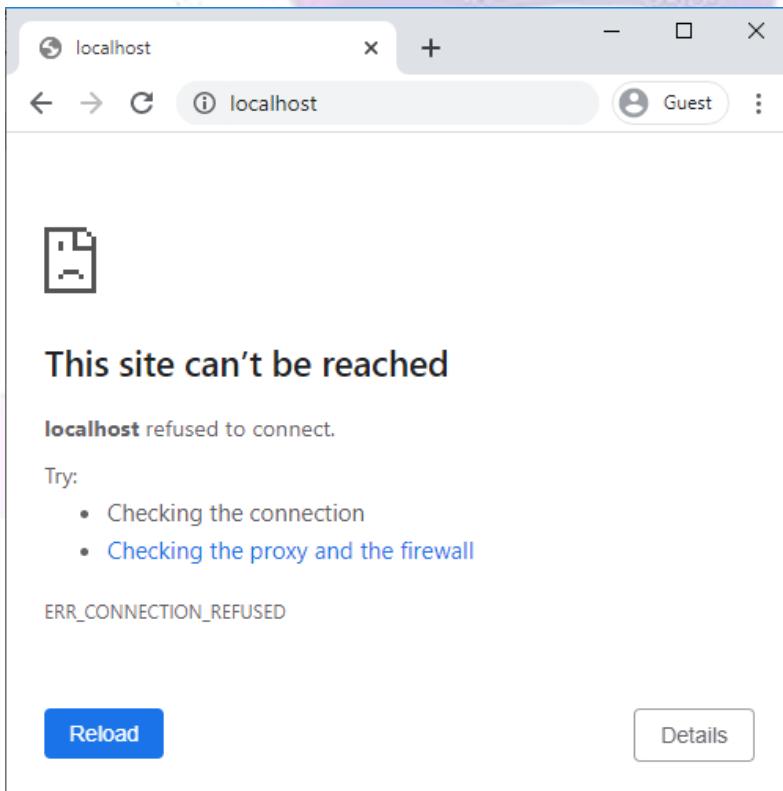
Enable the option “Internet Information Services” and click “OK”:



To confirm the IIS was installed correctly, type “localhost” in the browser’s address bar and press enter; if the IIS was installed correctly this page will be displayed:



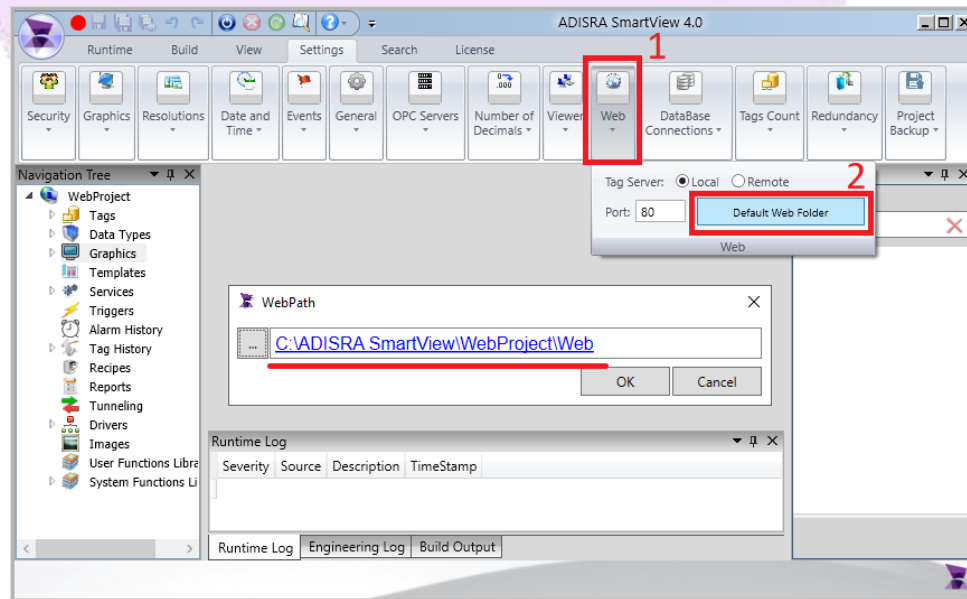
If the IIS was not installed correctly, this page will be displayed:



4. Configure Web Folder (ISS)

Follow the steps below to configure the folder where the HTML files will be saved:

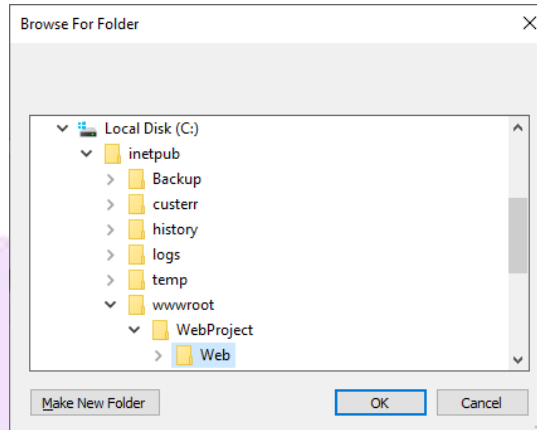
In the ADISRA SmartView settings ribbon, go to “Web” and select the “Default Web Folder” button, please make a note of the path because we will use it later.



It is possible to change this path if another folder is preferred. To select another folder, click the “...” button located on the left side within the WebPath box. Choose the folder where the HTML files are to be saved.

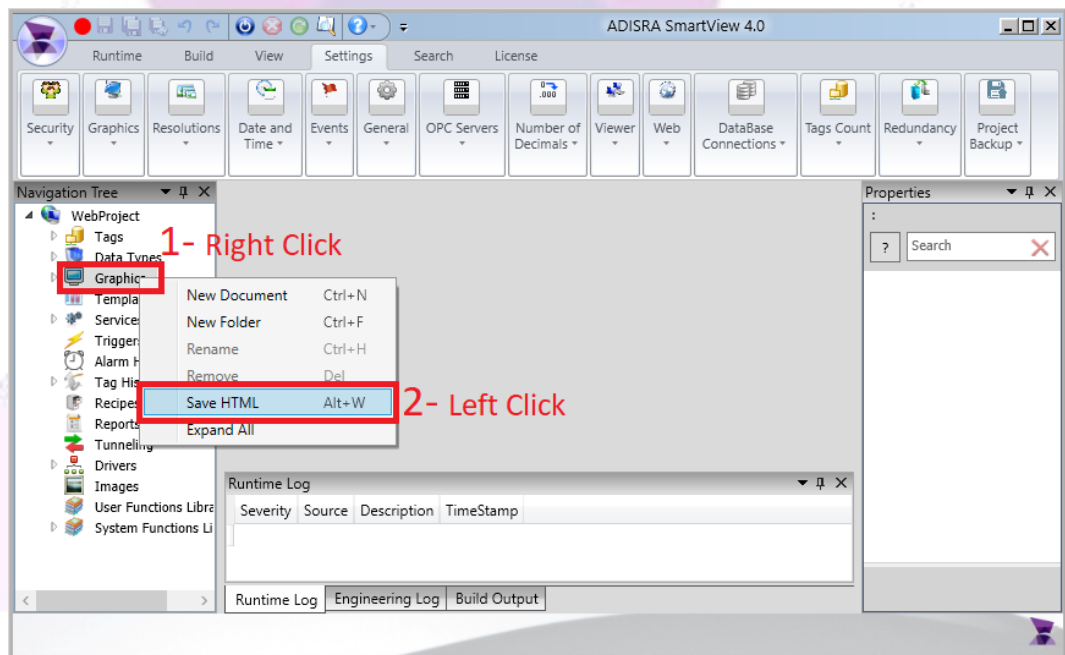
The “Web” folder can also be created inside the IIS web server folder. In our example, we will save the web files directly to the IIS wwwroot folder. Please select the wwwroot path as shown in the image below and create the following folder structure (i.e. WebProject\Web).

“C:\inetpub\wwwroot\WebProject\Web”. If doing so, please skip the next chapter:



4.1. Generate HTML Files

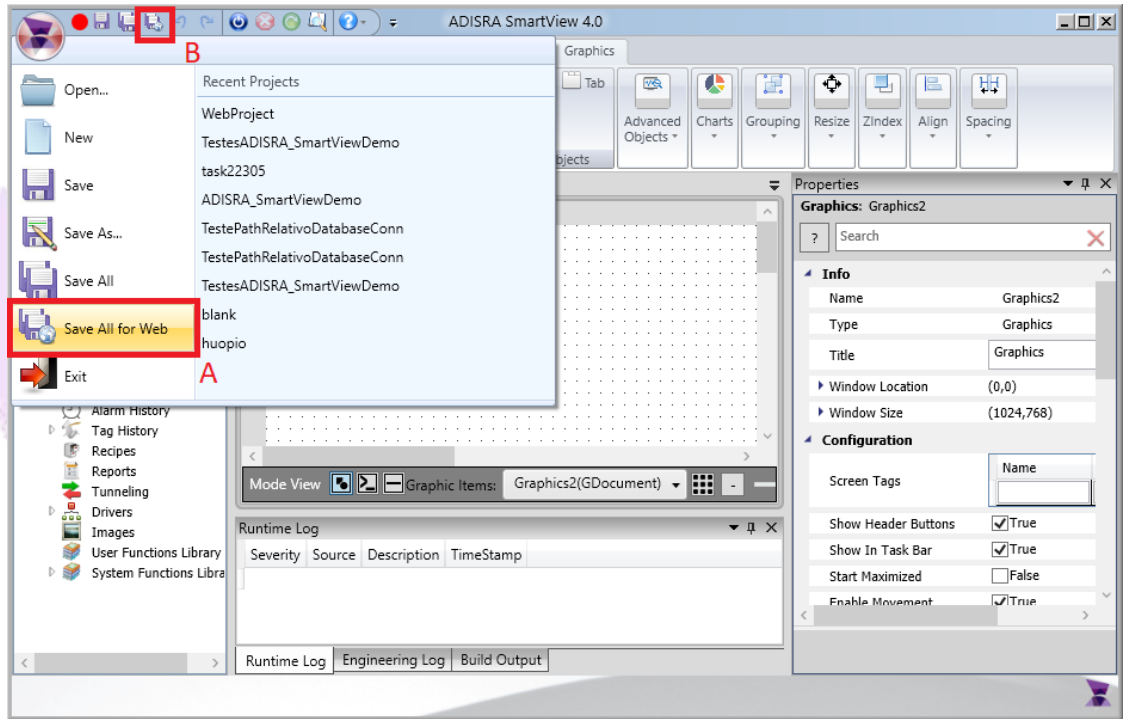
To generate the HTML files, right click the Graphics node in the ADISRA SmartView Navigation tree and left click the “Save HTML” option.



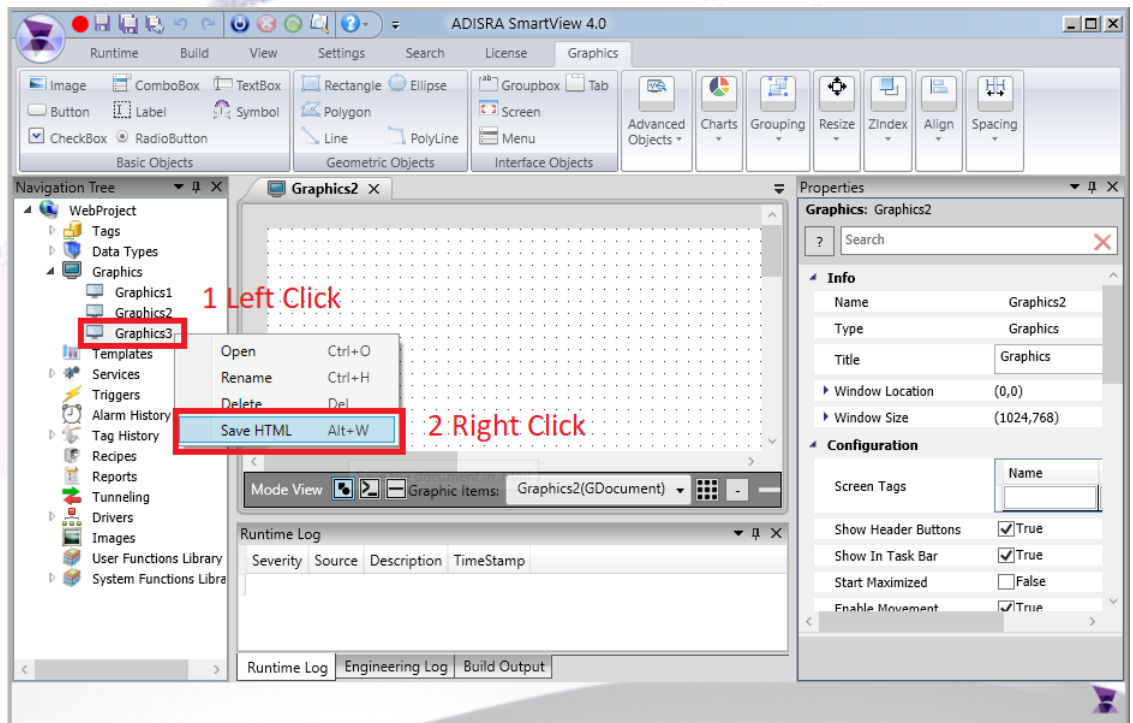
Other methods can be used, as shown below, to generate the HTML files:

Method 2 – Generate HTML files for all opened Graphics Documents.

It is important to understand that if the startup graphic (“Settings” -> “Graphics” -> “Startup Graphic”) is not opened, it will not generate the index [or HTML] file:



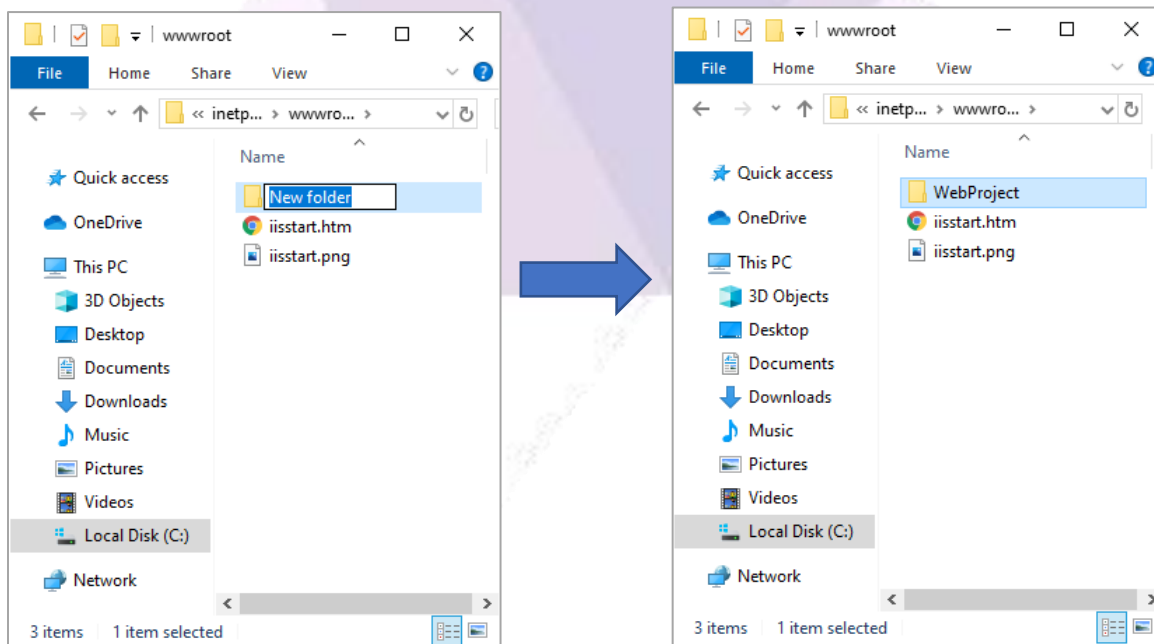
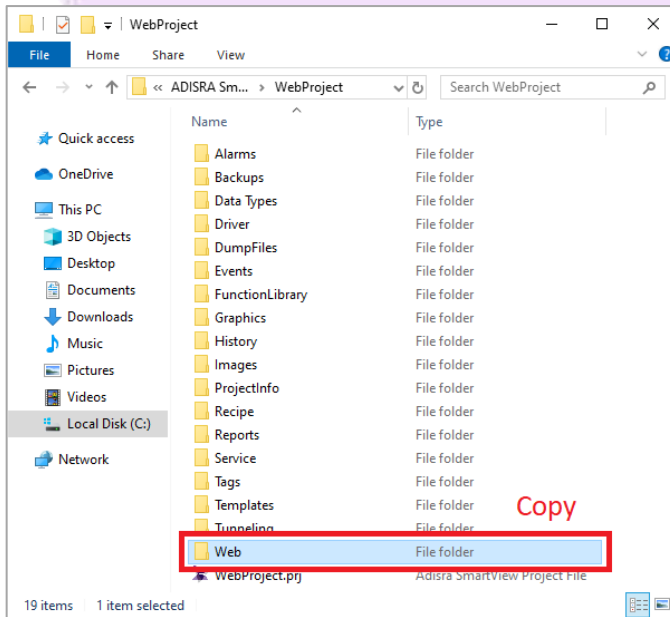
Method 3 – Generate HTML file for a specific Graphic Document:

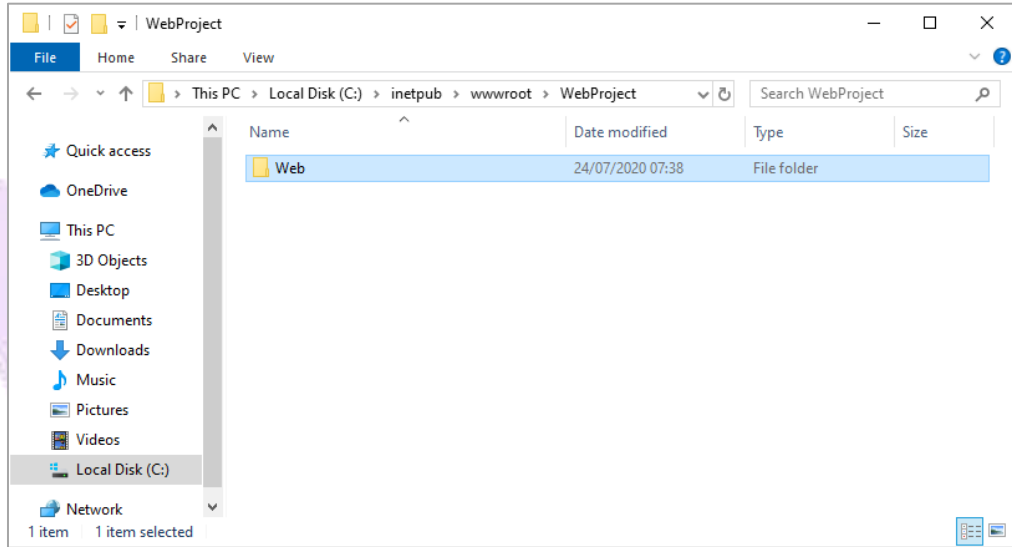


5. Configuring the Web Project Folder (ISS)

If you want to manually add the Web Project Folder follow the steps below:

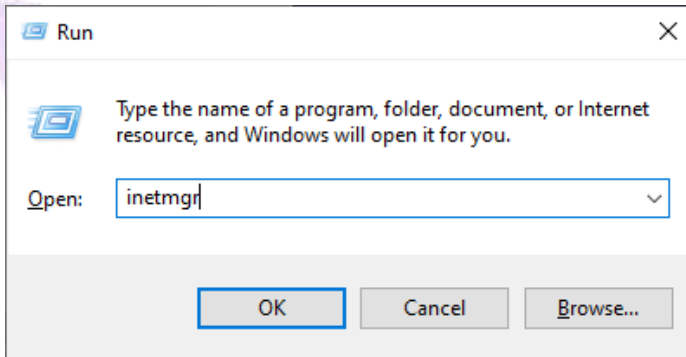
Using the file explorer, go to the project folder and copy the “Web” folder, then go to “C:\inetpub\wwwroot” and create a new folder called “WebProject”. Inside the “WebProject” folder, paste the “Web” folder.



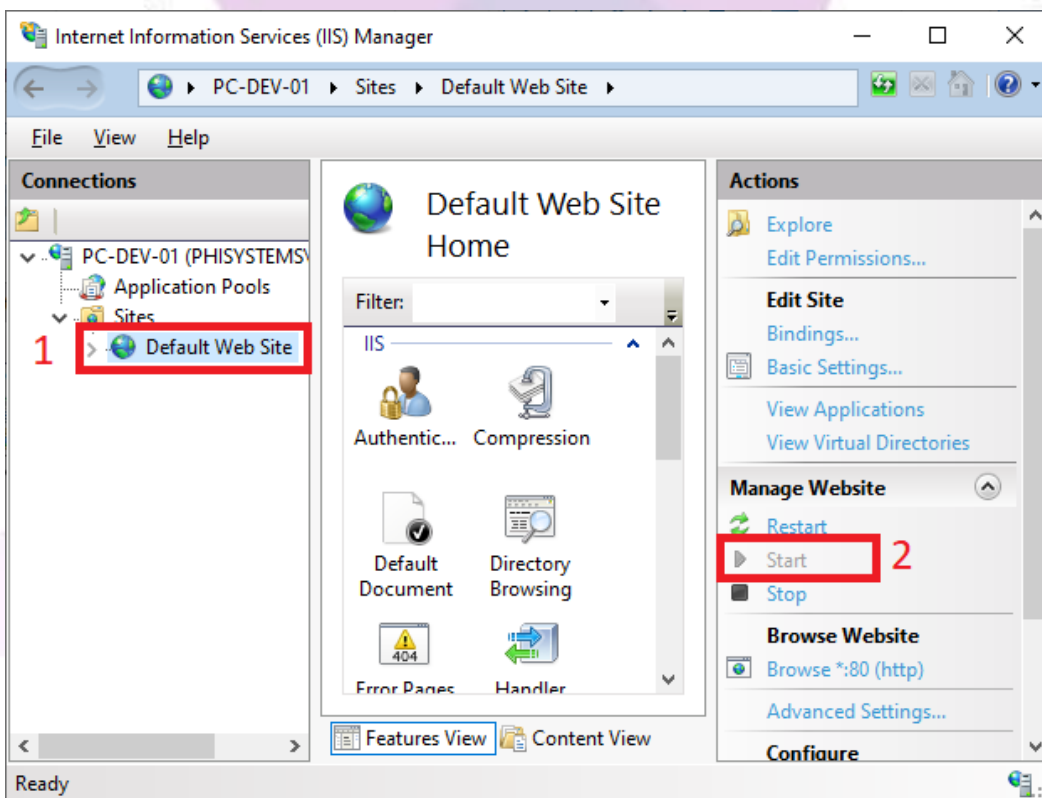


6. Configuring ISS and the Web Project

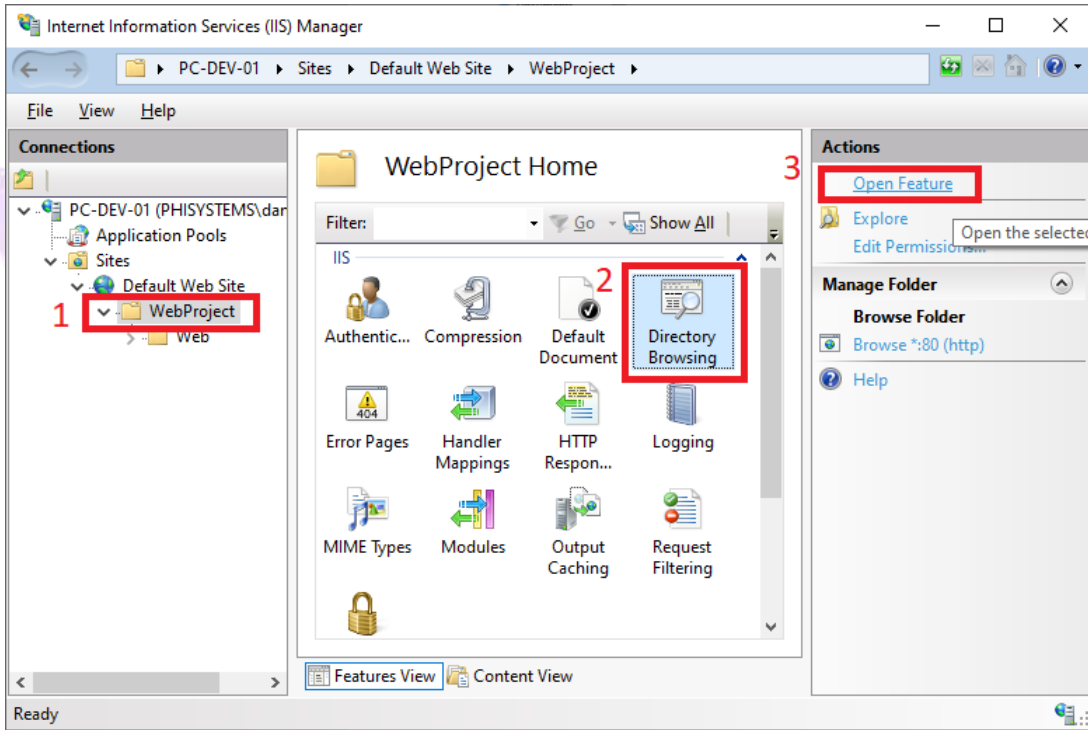
Press “Windows+R”, type “inetmgr”, and press OK to open the IIS:



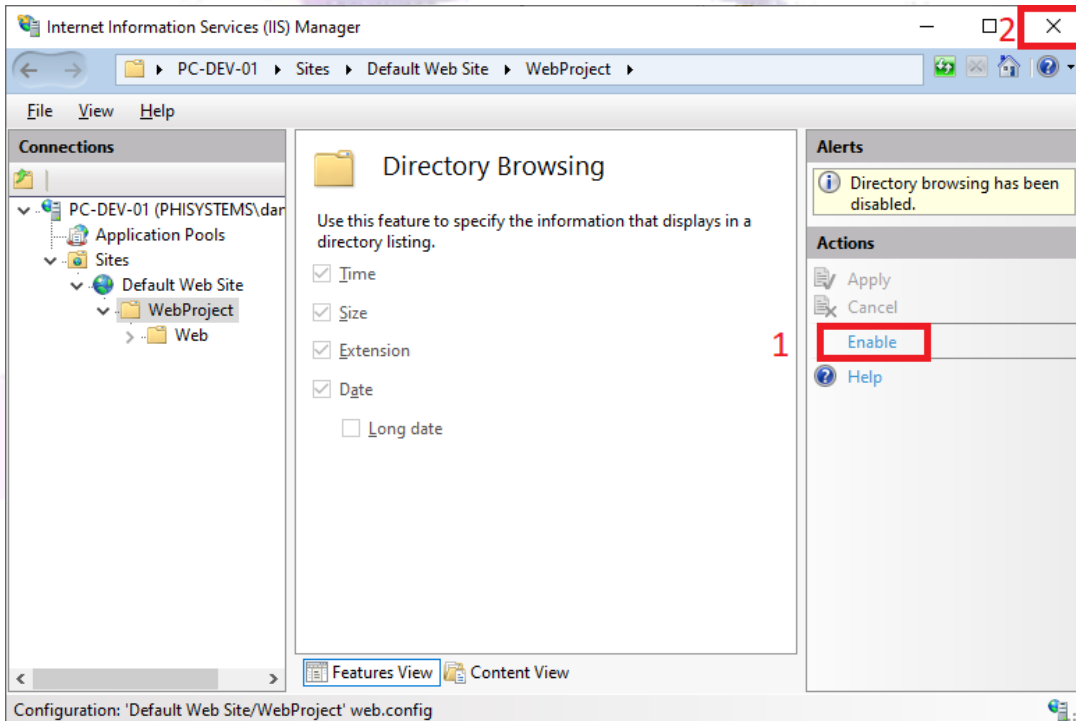
On the IIS Manager, make sure the service is started by selecting “Default Web Site” and check if it has started, if not, click the start button:



On the IIS Manager, select the created WebProject folder, then select “Directory Browsing”, and click on “Open Feature”.

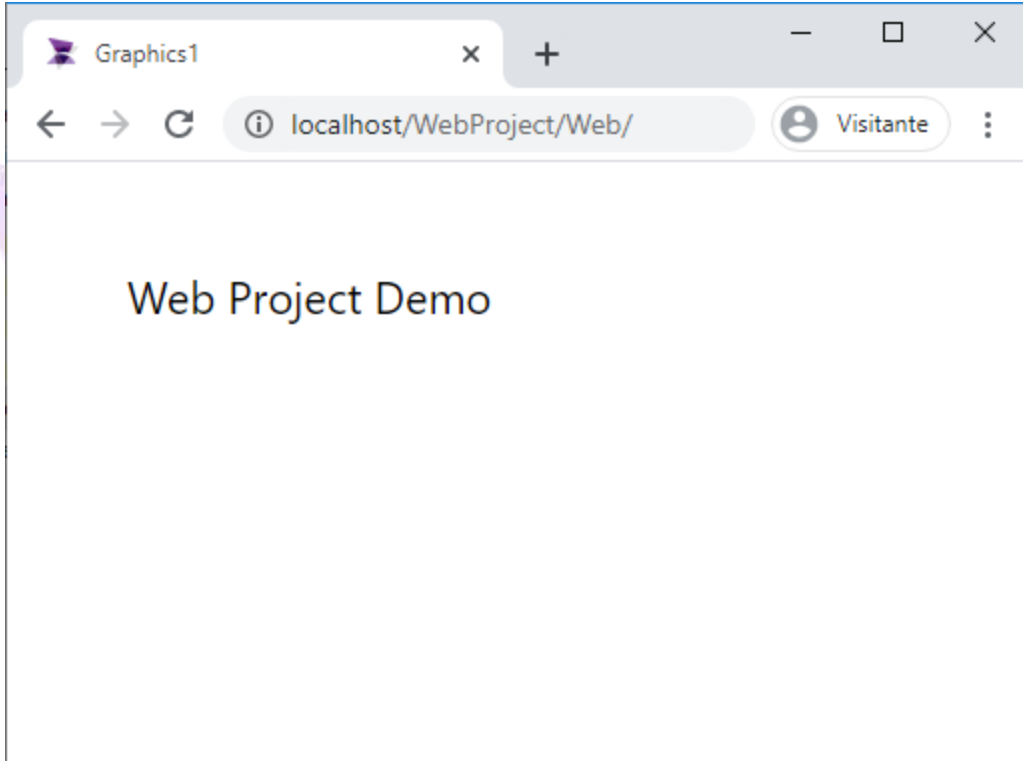


Enable the feature and close the IIS:

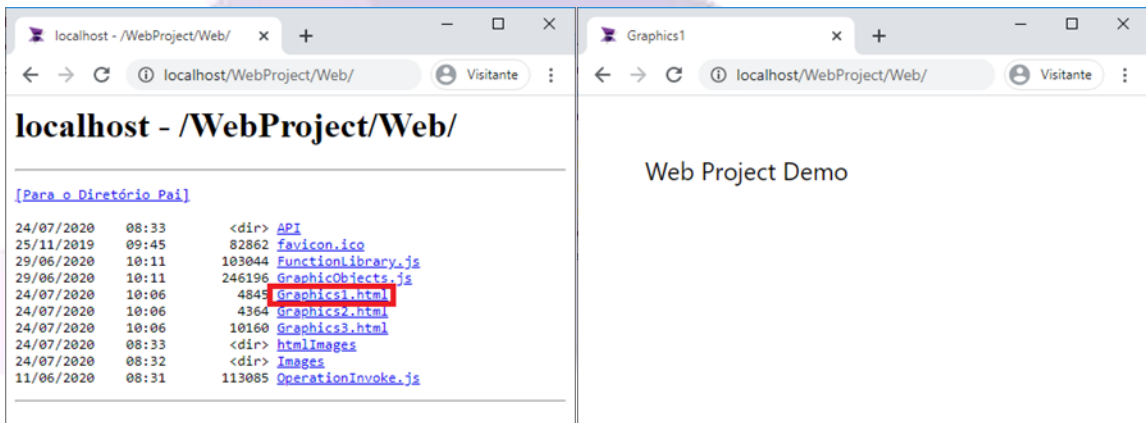


In the browser type the address “localhost/WebProject/Web”:

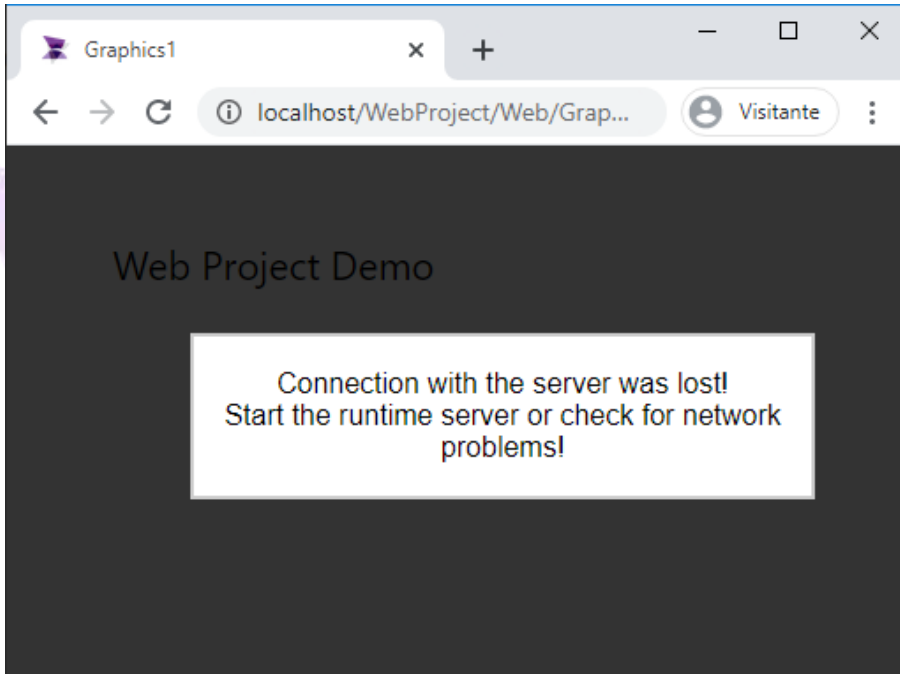
If the project has a startup graphic configured, it will be the index page and will open as shown in the image below:



If the project does not have a startup graphic configured, it will open the directory for a file to be chosen and opened, as shown in the image below. We will open Graphics1.html in this example:

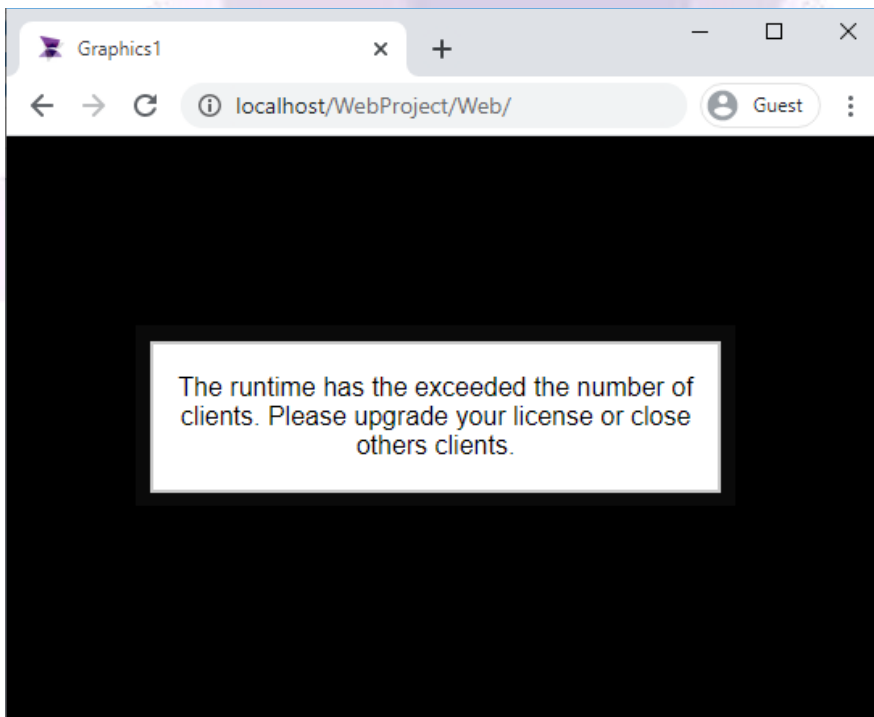


The runtime must be executing for the web pages to run, the runtime must be executing, otherwise it will appear like this:



Note: A page can also be accessed by typing the complete URL: "http://localhost/WebProject/Web/Graphics1.html"

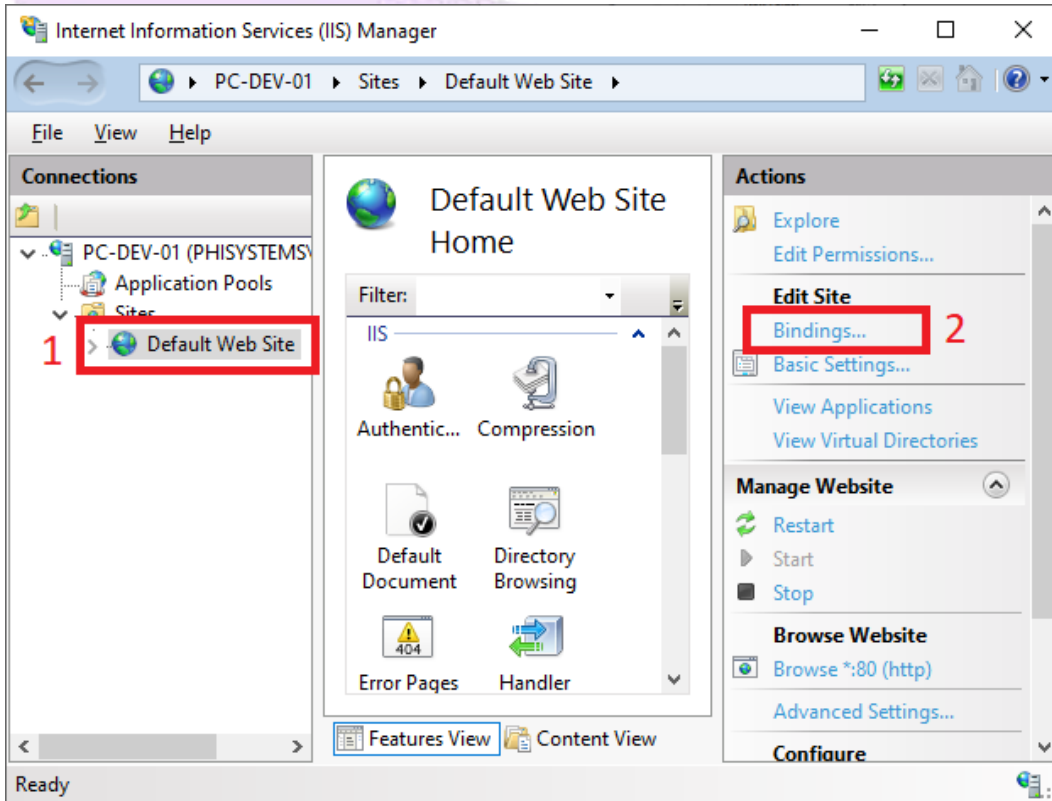
The web counts as client/viewer. If the application has reached its clients limit when trying to access the web page from another machine, the page shown in the image below will appear:



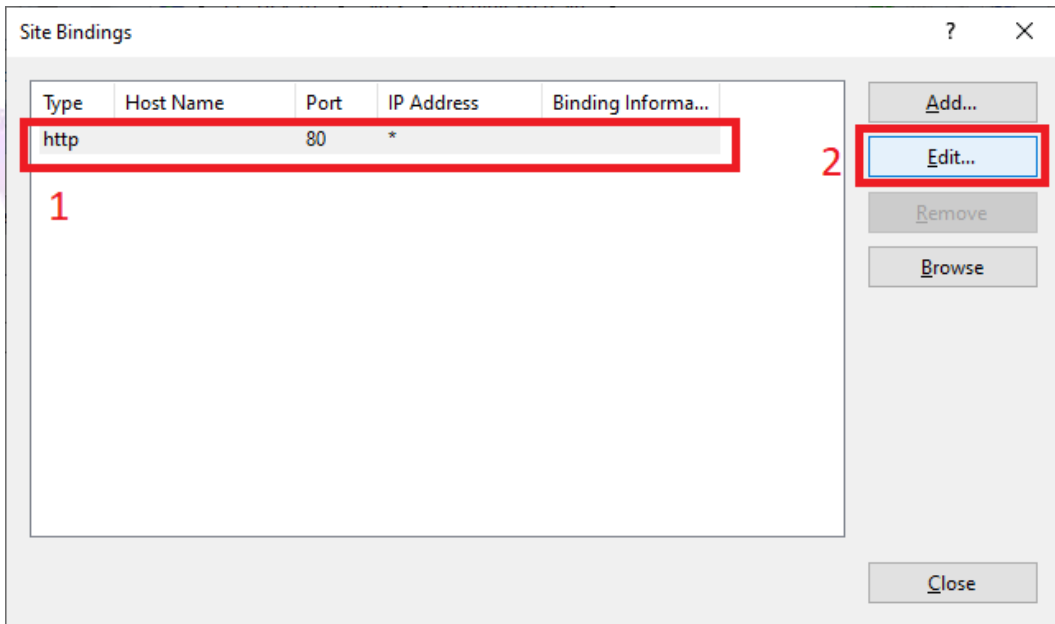
7. Changer Default Port (IIS)

Follow the steps below to change the default port:

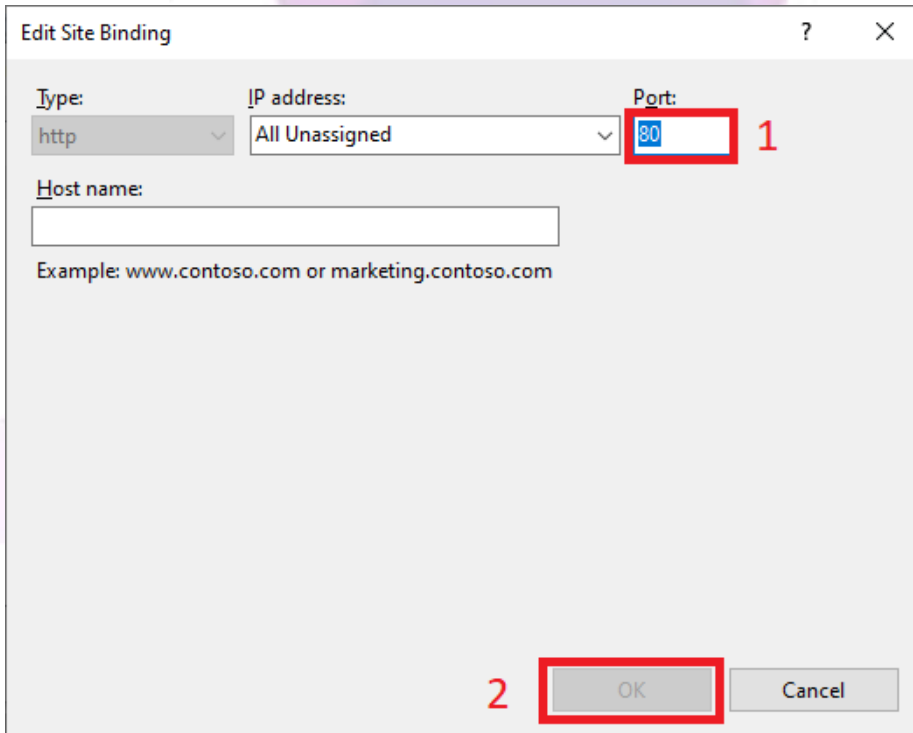
Press “Windows+R”, type “inetmgr”, and press OK to open the IIS. Select “Default Web Site” and click on “Bindings...”:



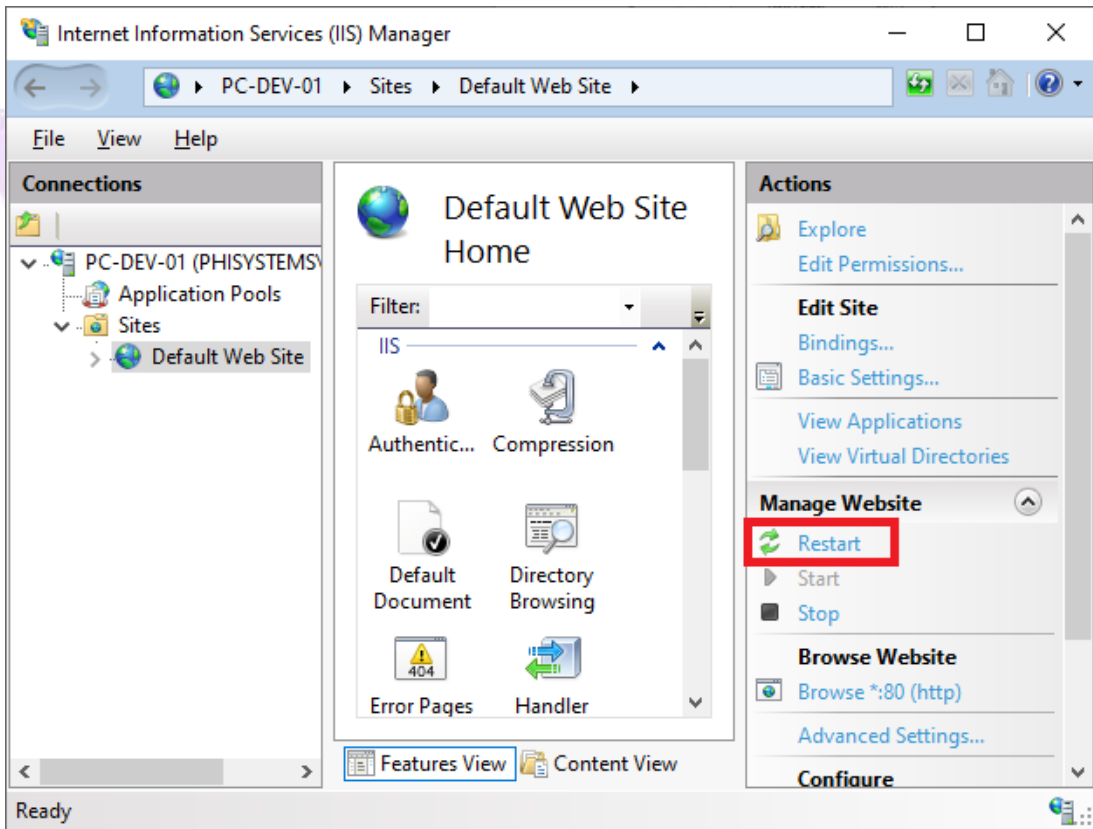
Select the item to edit and click the “Edit...” button:



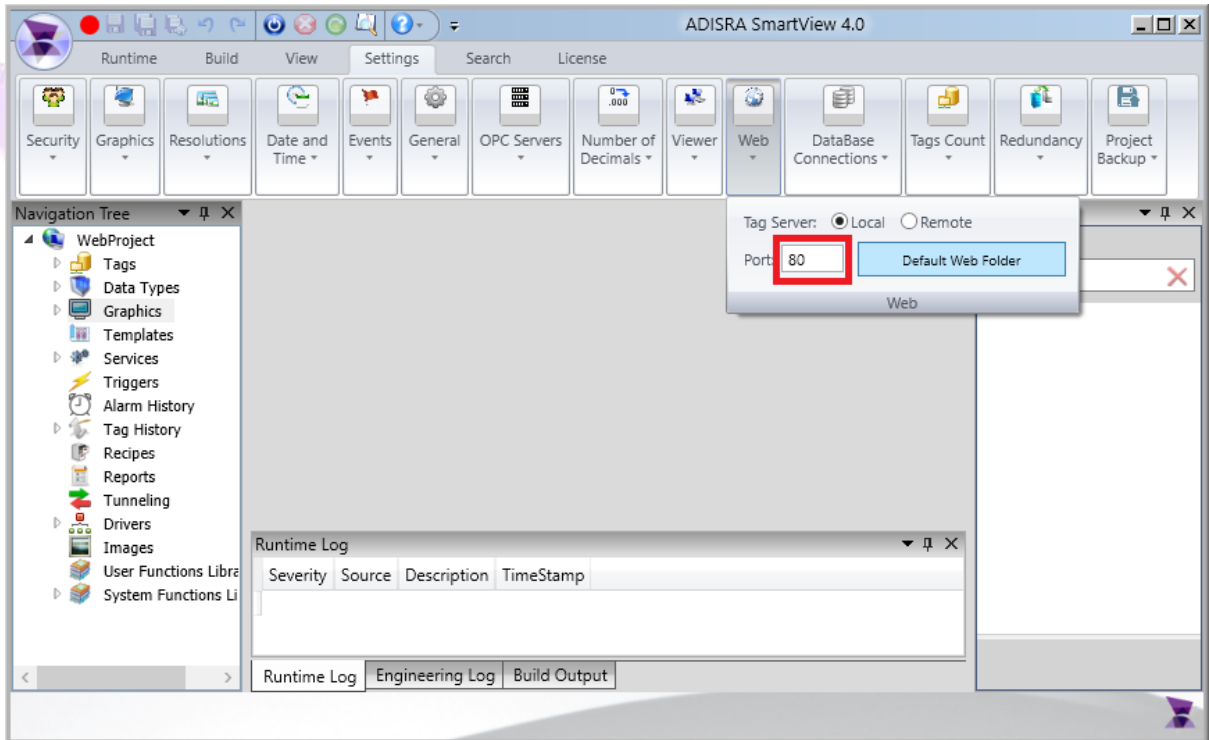
Type the new port to be used and press OK:



Restart the Default Web Site on the IIS:

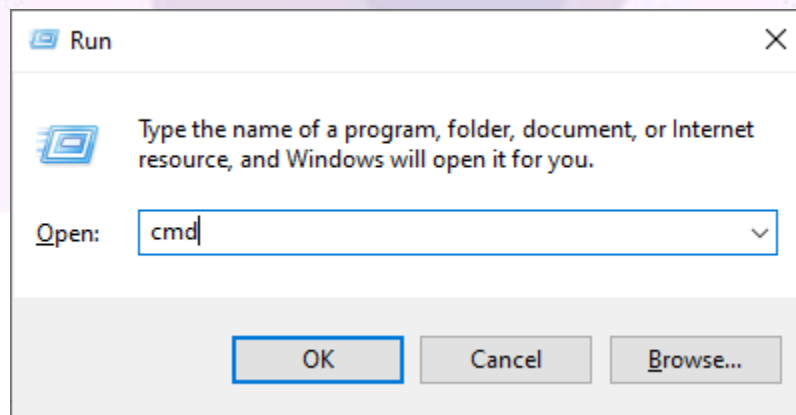


In the ADISRA SmartView settings ribbon, go to “Web” and type in the new port. The change will take effect when starting the next the Runtime:



7.1. Check Ports Being Used

Press “Windows+R”, type “cmd”, and press OK to open the Command Prompt:



In the Command Prompt, type “netstat – an” to see the ports that are being used:

```
Command Prompt
C:\>netstat -an

Active Connections

Proto Local Address           Foreign Address         State
TCP   0.0.0.0:80                0.0.0.0:0               LISTENING
TCP   0.0.0.0:135               0.0.0.0:0               LISTENING
TCP   0.0.0.0:443               0.0.0.0:0               LISTENING
TCP   0.0.0.0:445               0.0.0.0:0               LISTENING
TCP   0.0.0.0:3389              0.0.0.0:0               LISTENING
TCP   0.0.0.0:4840              0.0.0.0:0               LISTENING
TCP   0.0.0.0:5040              0.0.0.0:0               LISTENING
TCP   0.0.0.0:5432              0.0.0.0:0               LISTENING
TCP   0.0.0.0:7680              0.0.0.0:0               LISTENING
TCP   0.0.0.0:48400             0.0.0.0:0               LISTENING
TCP   0.0.0.0:48401             0.0.0.0:0               LISTENING
TCP   0.0.0.0:49664             0.0.0.0:0               LISTENING
TCP   0.0.0.0:49665             0.0.0.0:0               LISTENING
TCP   0.0.0.0:49666             0.0.0.0:0               LISTENING
```

8. Installing Apache

To install the Apache server, follow the steps below:

Check if your computer has the Visual C++ Redistributable 2015-2022 x64 package installed. If your machine does not have the Visual C++ package, download at the official site along with the Apache server archives, otherwise download only the Apache archives. The following link provides an explanation how to install Apache to windows.

<https://httpd.apache.org/docs/current/platform/windows.html#down>

Once installed, open the CMD (Command Prompt) and change the directory to the “Apache\bin” folder, then type “httpd.exe” and press enter. That command will start the Apache server and you can test if it is working entering “localhost” in your browser. The following page will appear if the test is successful.

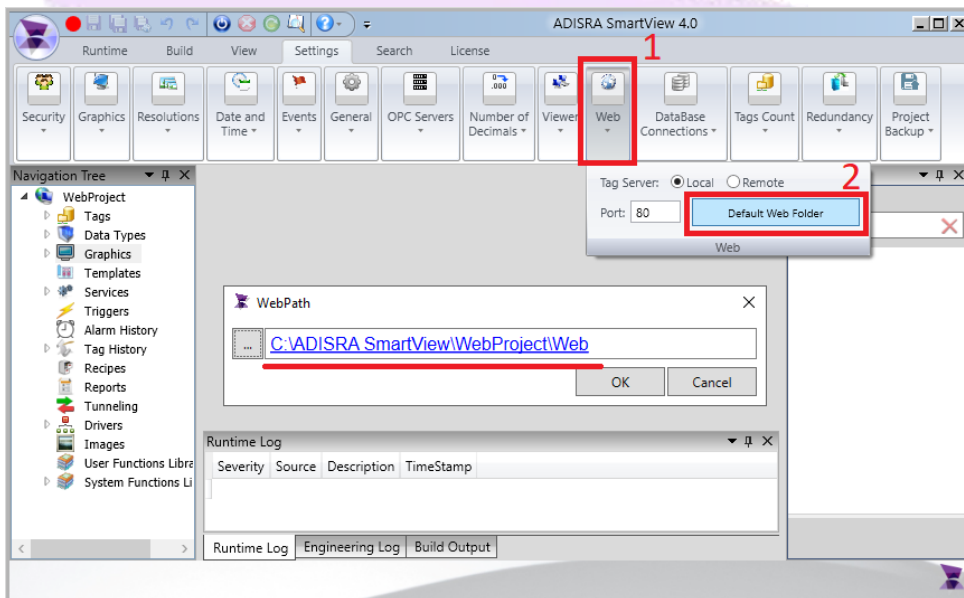
A screenshot of a web browser window showing the text "It works!" in a simple black font on a white background. The text is centered and appears to be the default response of an Apache web server when accessed via localhost.

Another way to start the Apache server is setting it as a service to the windows using the command “httpd.exe –k install” with the CMD in the “Apache\Bin” folder.

9. Configure Web Folder and Apache

Follow the steps below to configure the folder where the HTML files will be saved:

Like the IIS Web Folder section, go to “Web” and select the “Default Web Folder” button.



In this example, change the default folder location to “Apache\htdocs” folder and the ADISRA SmartView will automatically create a folder inside it.

If you want to set your own folder for the project, first you will need to decide a folder where the HTML projects will be saved, then inside the “Apache\conf”, with an text editor, open the “httpd.conf” and change the line as the image below to the identified folder.

```

220 #
221 # ServerName gives the name and port that the server uses to identify itself.
222 # This can often be determined automatically, but we recommend you specify
223 # it explicitly to prevent problems during startup.
224 #
225 # If your host doesn't have a registered DNS name, enter its IP address here.
226 #
227 #ServerName Graphic.html:443
228 #
229 #
230 # Deny access to the entirety of your server's filesystem. You must
231 # explicitly permit access to web content directories in other
232 # <Directory> blocks below.
233 #
234 <Directory />
235     Require all granted
236 </Directory>
237 #
238 #
239 # Note that from this point forward you must specifically allow
240 # particular features to be enabled - so if something's not working as
241 # you might expect, make sure that you have specifically enabled it
242 # below.
243 #
244 #
245 #
246 # DocumentRoot: The directory out of which you will serve your
247 # documents. By default, all requests are taken from this directory, but
248 # symbolic links and aliases may be used to point to other locations.
249 #
250 DocumentRoot "${SRVROOT}/htdocs"
251 <Directory "${SRVROOT}/htdocs">
252     #
253     # Possible values for the Options directive are "None", "All",
254     # or any combination of:
255     #   Indexes FollowSymLinks SymLinksifOwnerMatch ExecCGI MultiViews
256     #
257     # Note that "MultiViews" must be named *explicitly* --- "Options All"

```

It is possible to decide which port the apache will use. The following image shows the line inside the httpd.conf file that allows you to choose which port will be used.

```

49 # Mutex default:logs
50 #
51 #
52 # Listen: Allows you to bind Apache to specific IP addresses and/or
53 # ports, instead of the default. See also the <VirtualHost>
54 # directive.
55 #
56 # Change this to Listen on specific IP addresses as shown below to
57 # prevent Apache from glomming onto all bound IP addresses.
58 #
59 #Listen 12.34.56.78:80
60 Listen 80
61 #
62 #
63 # Dynamic Shared Object (DSO) Support
64 #
65 # To be able to use the functionality of a module which was built as a DSO you
66 # have to place corresponding 'LoadModule' lines at this location so the
67 # directives contained in it are actually available _before_ they are used.
68 # Statically compiled modules (those listed by 'httpd -l') do not need
69 # to be loaded here.
70 #
71 # Example:
72 # LoadModule foo_module modules/mod_foo.so
73 #
74 #LoadModule access_compat_module modules/mod_access_compat.so
75 LoadModule actions_module modules/mod_actions.so
76 LoadModule alias_module modules/mod_alias.so
77 LoadModule allowmethods_module modules/mod_allowmethods.so
78 LoadModule auth_module modules/mod_auth.so

```

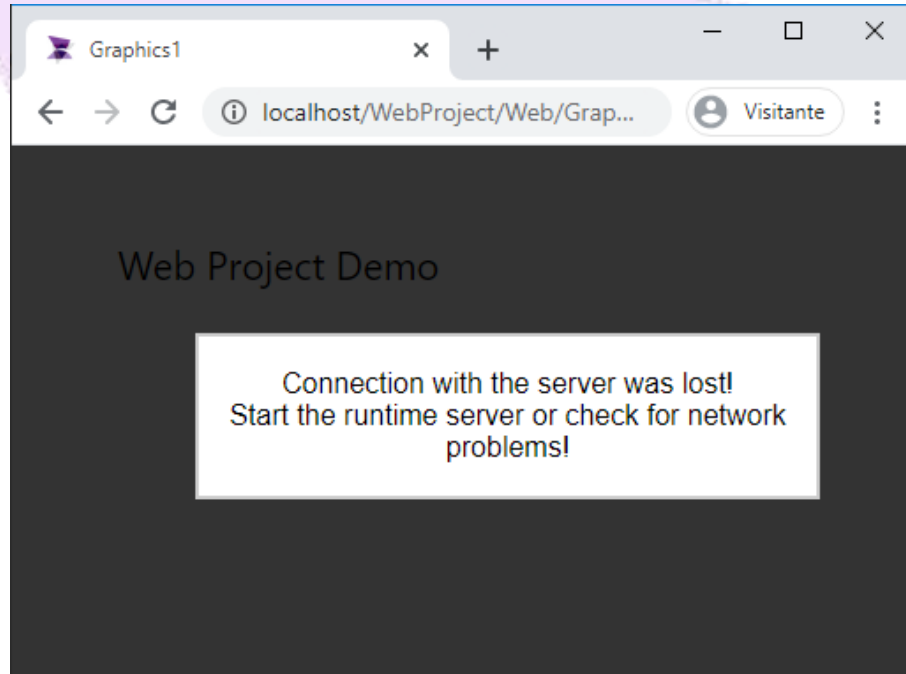
In this example we will use the port 80, but in other cases, the user can change the number to use another port.

10. Possible Errors

In this section, we will show how to resolve some errors that may occur:

10.1. Runtime Not Started

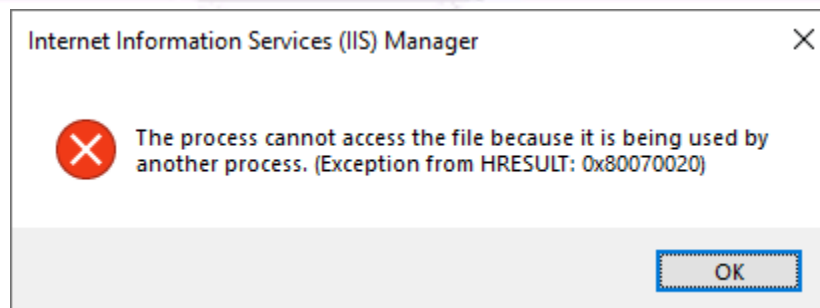
When trying to access the web page, the message shown in the image below appears



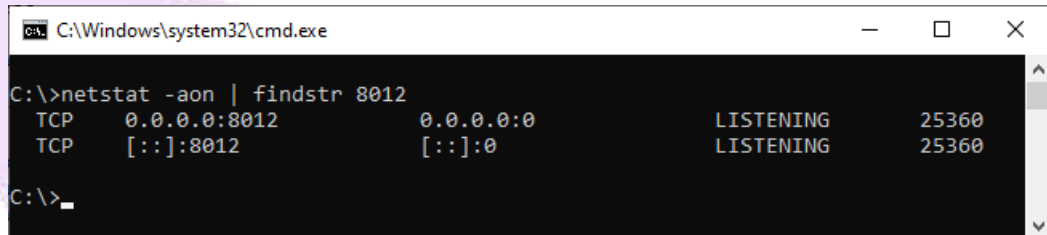
To resolve this error, restart the project's Runtime.

10.2. Port Already Being Used

When trying to start the web server, a message appears stating the configured port is already in use, or in the case of IIS, the message shown below appears:



First, check if the configured port is being used by opening the Command prompt and typing “netstat – aon | findstr port_number”. Instead of “port_number”, type the configured port to be checked. If the port is being used; the result will display as shown in the example below:

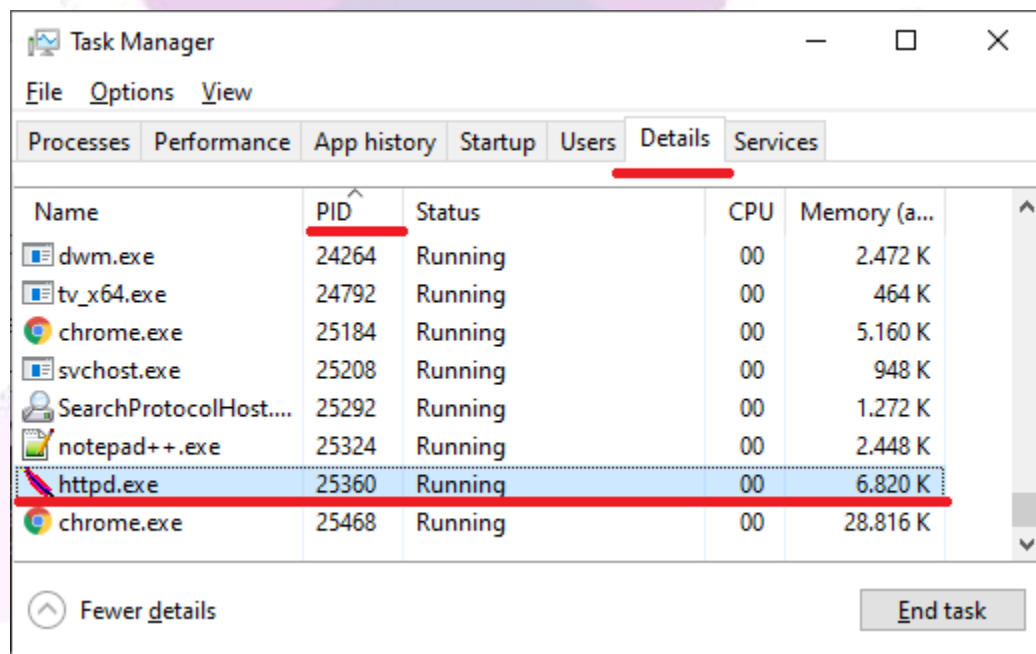


```

C:\Windows\system32\cmd.exe
C:\>netstat -aon | findstr 8012
TCP    0.0.0.0:8012    0.0.0.0:0      LISTENING   25360
TCP    [::]:8012     [::]:0        LISTENING   25360
C:\>

```

The number in the last column, in this example, “25360” is the process ID. To find which process this ID belongs to, open the task manager. In the “Details” tab, search for the ID number under the “PID” column, as shown in the example below:



Name	PID	Status	CPU	Memory (a...)
dwm.exe	24264	Running	00	2.472 K
tv_x64.exe	24792	Running	00	464 K
chrome.exe	25184	Running	00	5.160 K
svchost.exe	25208	Running	00	948 K
SearchProtocolHost...	25292	Running	00	1.272 K
notepad++.exe	25324	Running	00	2.448 K
httpd.exe	25360	Running	00	6.820 K
chrome.exe	25468	Running	00	28.816 K

Either end the task that is using the port or configure a new port number.

ADISRA®, InsightView™, and KnowledgeView™ are the registered trademarks of ADISRA, LLC.

© 2022 ADISRA, LLC. All Rights Reserved.

ADISRA · 3432 Greystone Drive, Suite 125 · Austin, TX 78731
Phone: 1-833-5ADISRA (1-833-523-4772)

www.ADISRA.com